



1st Floor Boardroom - 1



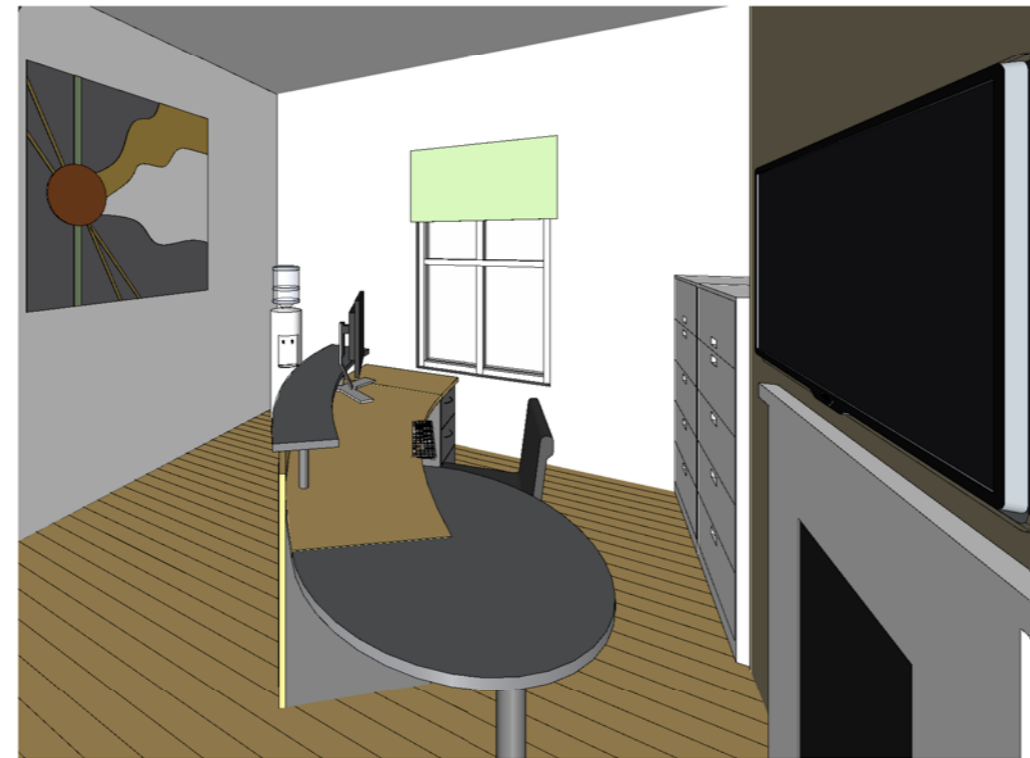
1st Floor Boardroom - 2



1st Floor Kitchen



Office - 1



Office - 2



1st Floor - Large Office



1st Floor - Large Office 2



1st Floor - Large Office 3

Rev.	Description:	Date:

Client:  
1850 Investment Group

Project Address:  
16 Kingsway, Altrincham, WA14 1PJ

Drawing Title:  
Visuals - 2

Project No. 11-1383      Drawing No. 006

Drawn By: DD      Checked By: CL

Date: 08/08/11      Scale: NTS @ A2



T: 01484 423111 / 0113 249 9994  
www.lucaslee.co.uk

All dimensions are in millimetres unless otherwise stated.  
Dimensions to be verified on site.  
Do not scale.  
Drawing not to be reproduced without permission.