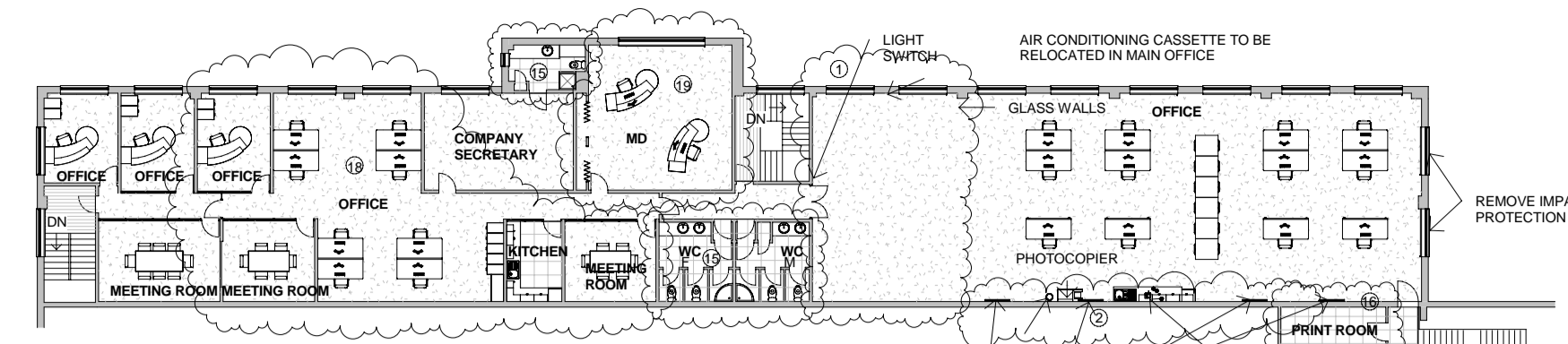
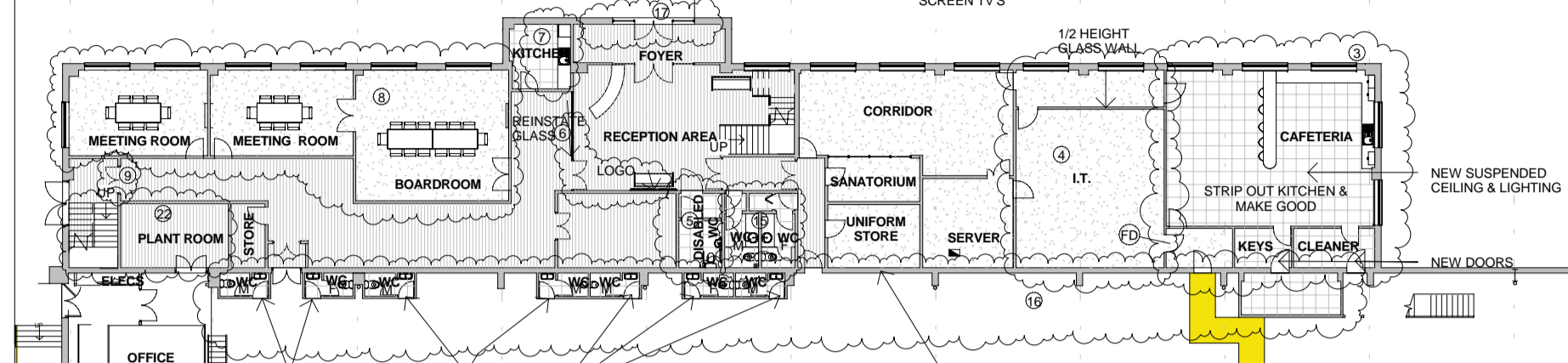




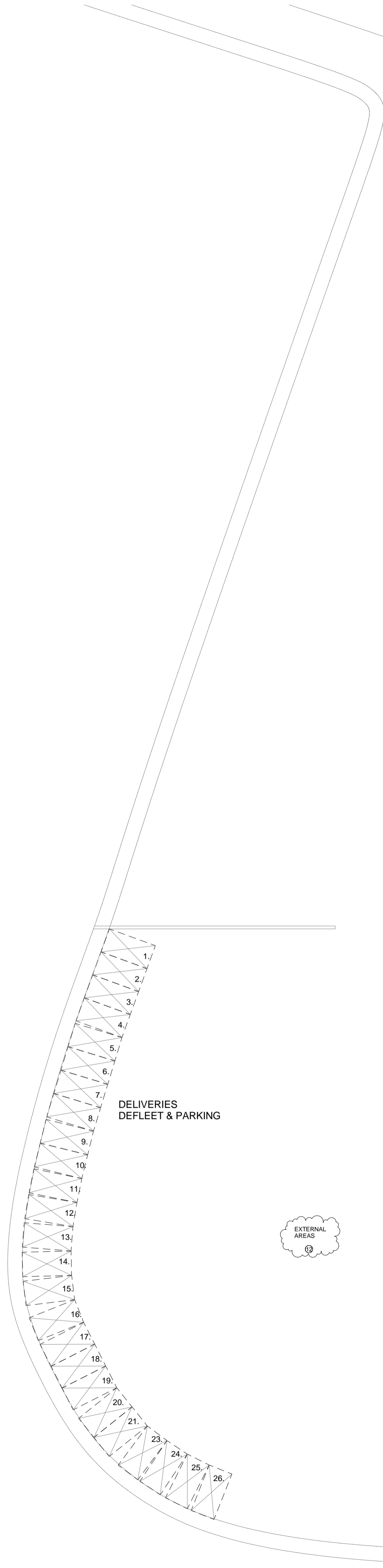
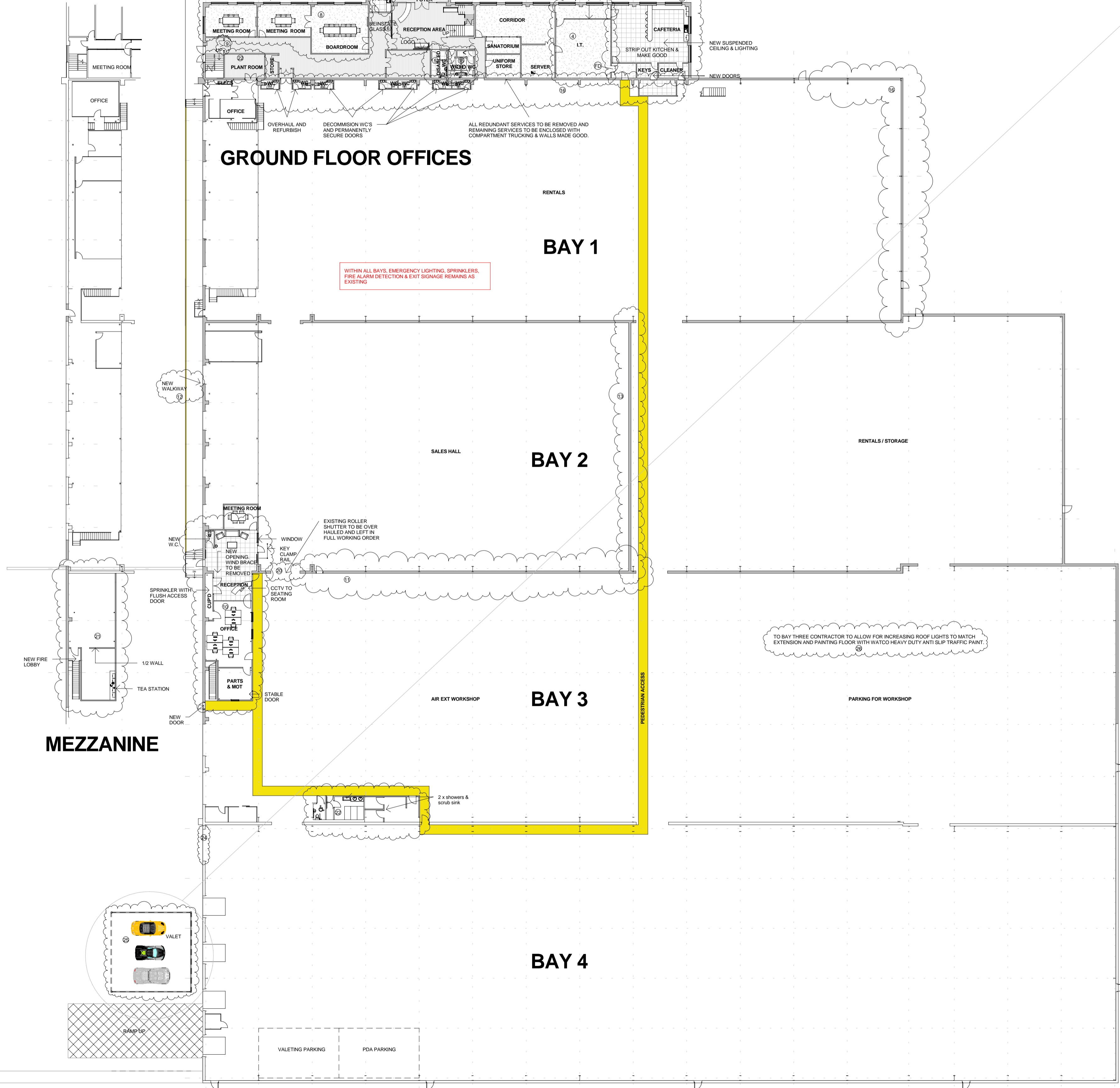
VALET POD



FIRST FLOOR OFFICES



GROUND FLOOR OFFICES



WITHIN ALL BAYS, EMERGENCY LIGHTING, SPRINKLERS, FIRE ALARM DETECTION & EXIT SIGNAGE REMAINS AS EXISTING

TO BAY THREE CONTRACTOR TO ALLOW FOR INCREASING ROOF LIGHTS TO MATCH EXTENSION AND PAINTING FLOOR WITH WATERED HEAVY DUTY ANTI SLIP TRAFFIC PAINT

Rev.	Description	Date
H	Note added for B. Regs (in red)	22.04.13
G	Reception, Office, Parts & MOT area amended, yellow pedestrian access route added, external stairs amended	27.03.13
F	Ground floor Reception near Bay 3 has been divided into Office, Parts & MOT with new doors, window near reception has been made bigger, windows have been removed at Mezzanine Level. Fire Door removed in IT. New door between IT & Server	26.03.13
E	2 x Showers added at 1st Fl & W.C.'s removed. C/P - now showing 4 T.V.'s instead of 3. Fire Door shown in IT & door being changed	22.03.13
D	Note added re AC, FD & Office increased in size, IT relocated, ex IT becomes sanatorium & uniform store. No 20 note & bubble moved, fire door being reversed, 1/2 wall added, 2 desks added to office, shower room amended road & pavement added, valeting & PDA parking added	01.03.13
C	Site details shown on dwg, valet pod shown, various amendments to offices & bays - see separate sheets for details. No 15 fire door no added, Director's Office relabelled to MD, Company Secretary relabelled to Meeting Room, Tea Point now relabelled to Refreshment Centre and location amended, Cafeteria amended, Boardroom reduced in size, Substation relabelled to Plant Room, Stores relabelled to Keys, Cleaner & Sanatorium. Reception area near No.13 amended. No. 22 Shower Room amended. New parts store removed.	26.02.13
B	Scale of dwg changed to enable it to fit all of it on the sheet, numbering altered. New showing No. 1/22. Furniture & flooring added. Notes added.	18.02.13
A	Numbers 1-13 & bubbles added.	23.01.12

Client:
Global Autocare

Project Address:
Geldered One, LEEDS

Drawing Title:
OVERALL PLAN

Project No: 13-1578 Drawing No: 002 RevH
 Drawn By: DP Checked By: CL
 Date: 22.04.13 Scale: 1:300 @A1



T: 01484 423111 / 0113 249 9994
www.lucaslee.co.uk

All dimensions are in millimetres unless otherwise stated. Dimensions to be verified on site. Do not scale. Drawing not to be reproduced without permission.